



Secure Storage | 4000 safe

£4,000 £40,000 30min



The Associated 4000 range of safes are a cost-effective solution suitable for domestic and medium commercial application combining burglary and fire protection, available in a choice of 5 sizes. With an enhanced 65mm body construction, secured by a heavy gauge steel plate door and added drill & fire resistance, the 2-way bolt work is protected by a live A.E.D for additional protection.

- Fire Rating: Provides up to 30 mins fire protection
- Locking: Key locking as standard. Electronic, combination or biometric locking upgrades available
- Rear or base fixing options available
- Fitted with adjustable shelves



Size	External*	Internal	Weight	Volume	Shelves
1	456 x 405 x 435	356 x 305 x 360	68	32	1
2	557 x 405 x 435	457 x 305 x 360	77	41	1
3	684 x 506 x 555	584 x 406 x 480	113	99	1
4	837 x 506 x 555	737 x 406 x 480	134	125	2
5	1370 x 608 x 645	1270 x 508 x 570	230	327	2

* Handle Projection: 45mm • Dimensions (HxWxD) : mm • Weight : kg • Volume : ltr * 5 year warranty is subject to T & C's. Full details available on request



Locking options



La Gard Combogard Pro

- 1 Manager + 9 Users
- Audit trail 63 event
- Time delay feature



La Gard AuditGard

- 1 Master + 1 Manager + 8 Users
- Audit Trail 512 event
- Time delay feature



Dormakaba Aessor USB

- 1 Master + 2 Manager + 18 Users + 1 Courier
- Audit Trail 10,000 events
- Time delay & time lock feature



Tecnosicurezza MiniTech

- 1 Master, 1 Manager + 48 users
- Audit trail 5,500 events
- Time delay & time lock feature

Full range of VdS approved locks available

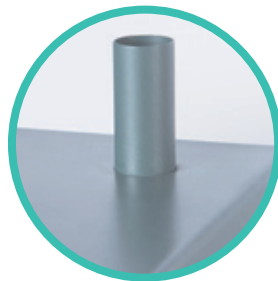
Deposit options



Envelope



Drawer Trap



Airtube



Rotary



Rotunda

Optional Extras



Lockable Deposit
Compartments



Drawers



Lockable
Compartments



Shelves



Bespoke colour options
*Full range of RAL
colours available