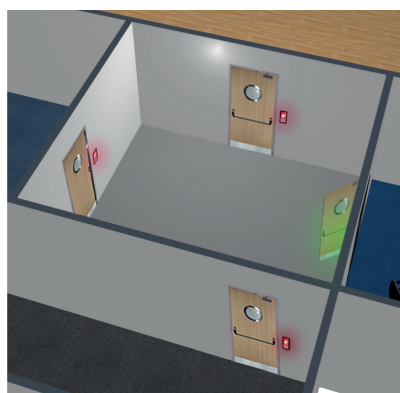
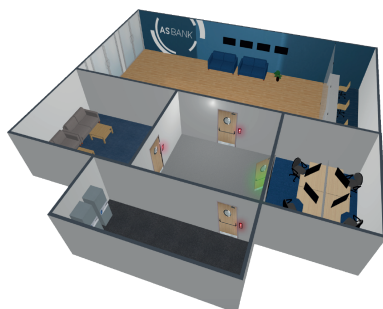




**ASSOCIATED
SECURITY**



Access Control | Interlocking Doors



Our interlocking door system is an effective way of ensuring that your building and valuables remain safe and secure. By utilising an interlocking door system within your business premises, this provides a high-security solution to the prevention of unauthorised access from being granted, ensuring that your personal assets or company assets remain secure and there is a significantly lower risk of prohibited access being gained.

Interlocking door systems work through electronic access control locking systems connected to each door. The control electronics generate a signal to indicate when a door is closed and secure, which would allow access to the next door in the sequence of interlocking doors within your premises.



Each controller is also fitted with a control input that will prevent the releasing of the locking device. Through cross-connecting these control signals, the door controllers communicate the door status and only open one door at any given time.

This two or more door system works by ensuring that if one door is open or unlocked, the remaining doors remain locked and refuse access.

Each door is electronically locked and monitored. The control electronics then generates a control signal to indicate when the door is closed and secure.

Each controller also has a control input that will prevent the releasing of the locking device. By cross-connecting these control signals, the door controllers communicate the door status and only open one door at any given time.